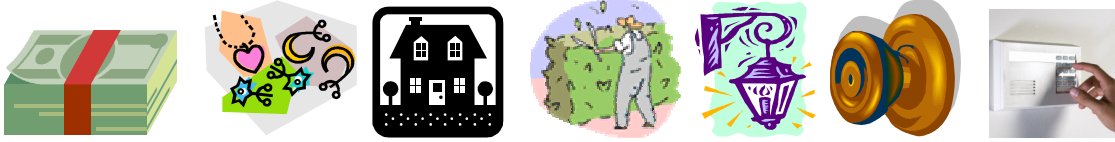


Arlington Heights Police Department

RESIDENTIAL BURGLARY PREVENTION



Unfortunately, we are no longer living in the “good old days” when we could leave our doors unlocked, windows open and garage door up. Criminals are looking for those opportunities and more when picking a target. Your goal is to create a secure environment that a criminal will avoid - an **attempt** to break in is too much.

BURGLARY FACTS:

- 🔒 National average loss: \$1,991 per offense (FBI 2007)
- 🔒 64% of residential burglaries occurred during daylight hours (FBI 2007)
- 🔒 Force used in 63% of residential burglaries.
- 🔒 Front door is the most common entry point

PREVENTION TIPS:

- 🔒 Address numbers should be clearly visible from the street – helps improve police and fire response times
- 🔒 Exterior lighting: Automatic sensor lighting in front and motion detection lighting in back.
- 🔒 Use solid core exterior doors with double key deadbolt locks (Min. 1” throw/3” screws).
- 🔒 If a window is close to the door - keep the key a safe distance away.
- 🔒 Install a door viewer if the door is solid.
- 🔒 Sliding glass doors should have a burglar bar in the track.
- 🔒 Landscaping – bushes should be 3’ or lower and trees should be trimmed 6’ up. This will increase natural surveillance.
- 🔒 Make sure alarm system is functioning properly.
- 🔒 Consider purchasing a safe for valuables and firearms. Secure safe to floor or wall.
- 🔒 Make a list of your valuables, to include make, model and serial number.
- 🔒 Make a video inventory of your property.

VACATION TIPS:

- 🔒 Make your home look like you are still there.
- 🔒 Have several electronic devices on timers: lights, radio, television, etc.
- 🔒 Have a neighbor or friend collect mail or newspapers.
- 🔒 Do not stop these services – would you tell a complete stranger that you are on vacation?
- 🔒 In winter, have your driveway shoveled.
- 🔒 Tell a trusted neighbor that you will be away so they can watch for suspicious activity.

REPORTING A BURGLARY:

- 🔒 In the event you arrive home and find it forcibly entered – **DO NOT ENTER.**
- 🔒 Go to a neighbor’s home and call 911.
- 🔒 Stay there until police arrive and provide assistance as requested.

Contact the Arlington Heights Police Department Community Services Bureau Crime Prevention Officer for a free Home/Business Security Survey (847-368-5300).